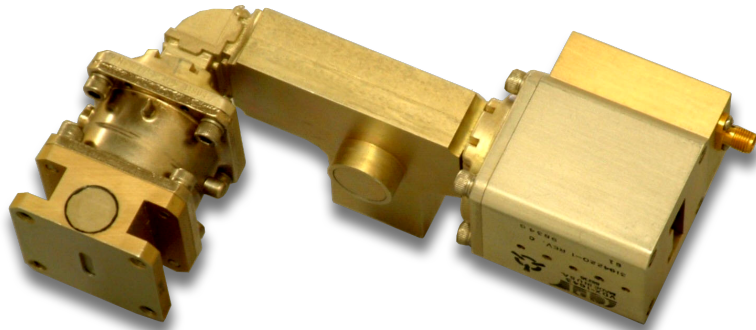


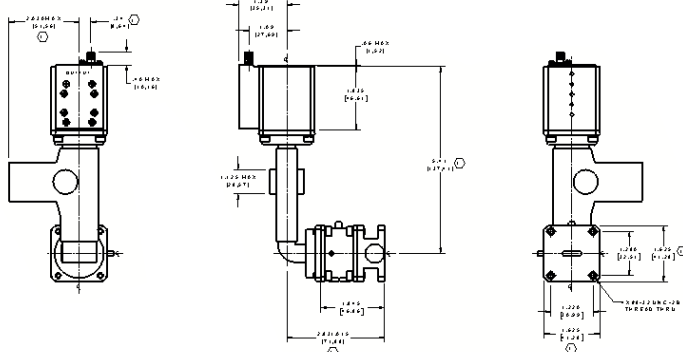
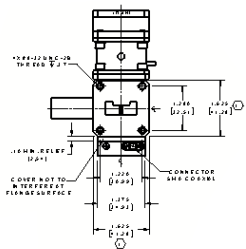
CPI Electron Device Business - Limiter Attenuator



Passive, X-Band Pre-TR, TR Limiter with non-reflective integral continuously variable attenuator.

With a history of producing high quality products, we can help you with your limiter attenuator.

Contact us at ElectronDevices@cpi-edb.com or call us at +1 978-922-6000.



FEATURES:

- Frequency range: 9.4 - 10.1 GHz
- Peak power: 6 kW
- Duty cycle: 0.01
- Pulsewidth: up to 40 μ Sec
- Insertion loss: 1.25 dB max
- VSWR: 1.4:1 max
- Flat leakage: 50 mW max
- Spike leakage: 500 mW max
- Breakdown power: 50 mW max
- Recovery time (1 dB):
 - Pulsewidth < 10 μ S: 5 μ S max
 - Pulsewidth > 10 μ S: 10 μ S max
- 0 - 36 dB attenuator

BENEFITS:

- Wide pulsewidth
- Integral variable attenuator

APPLICATIONS:

- Specification variations available for various market uses



Beverly Microwave Division
 150 Sohier Road
 Beverly, Massachusetts
 USA 01915

tel +1 978-922-6000
 email ElectronDevices@cpi-edb.com
 fax +1 978-922-8914
 web www.cpi-edb.com

For more detailed information, please refer to the corresponding CPI EDB technical description if one has been published, or contact CPI EDB. Specifications may change without notice as a result of additional data or product refinement. Please contact CPI EDB before using this information for system design.

©2025 CPI Electron Device Business. Company proprietary; use and reproduction is strictly prohibited without written authorization from CPI EDB.